

An abstract painting featuring vertical stripes of various colors including blue, orange, brown, and grey. The stripes are of varying widths and are layered, creating a sense of depth and texture. The overall composition is rhythmic and dynamic.

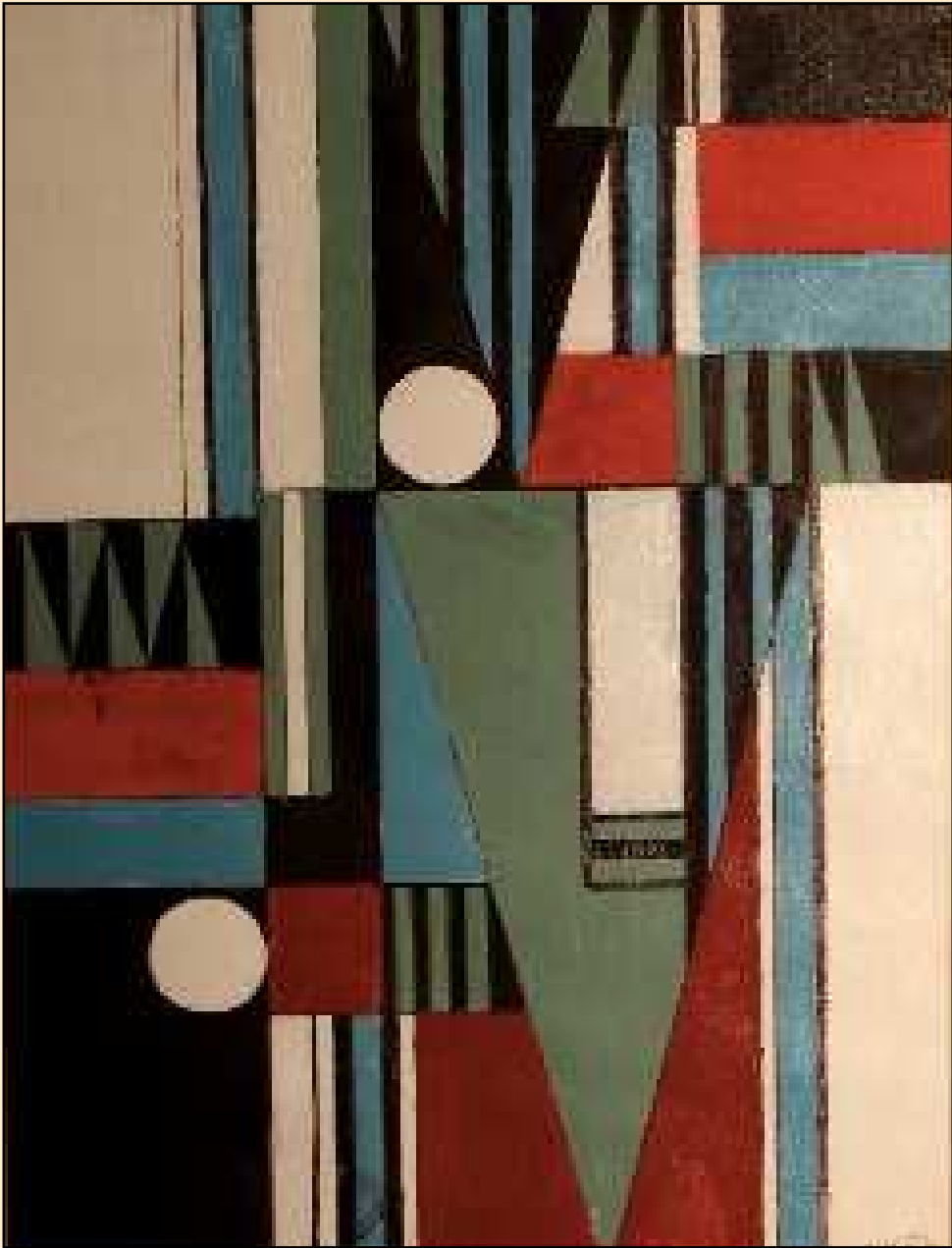
ESTELLA DEN BOER



ESTELLA DEN BOER

1912-2010

1





3





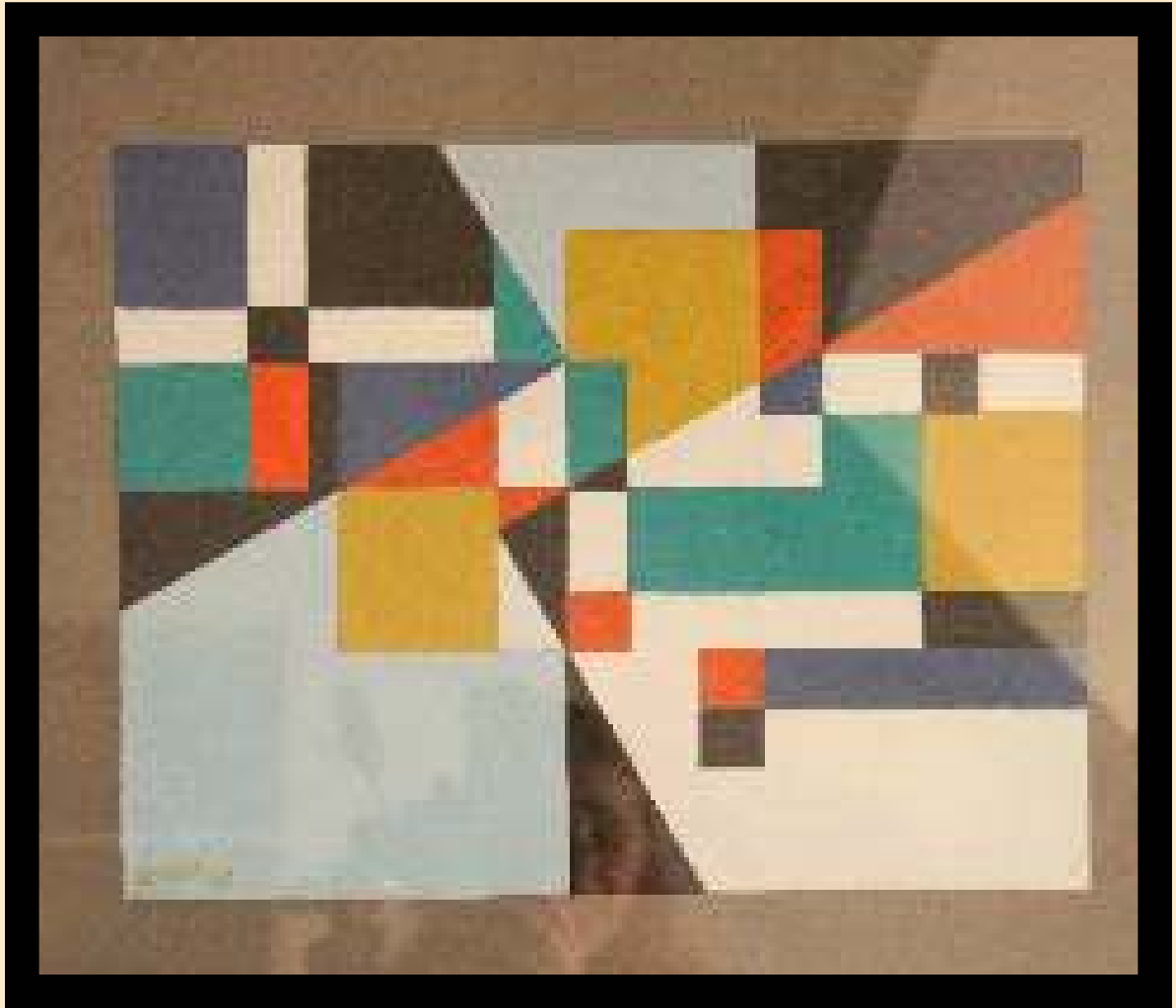






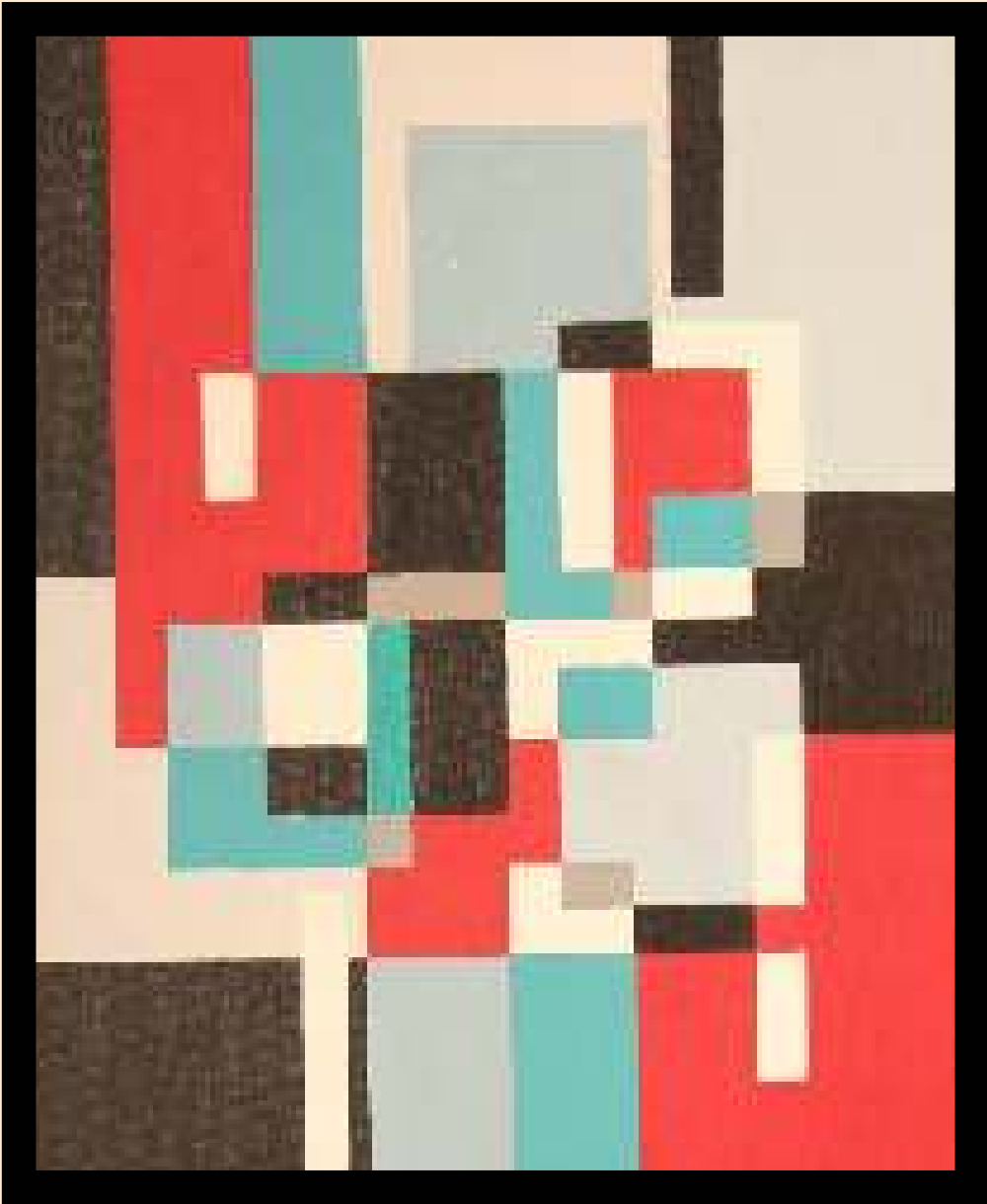
















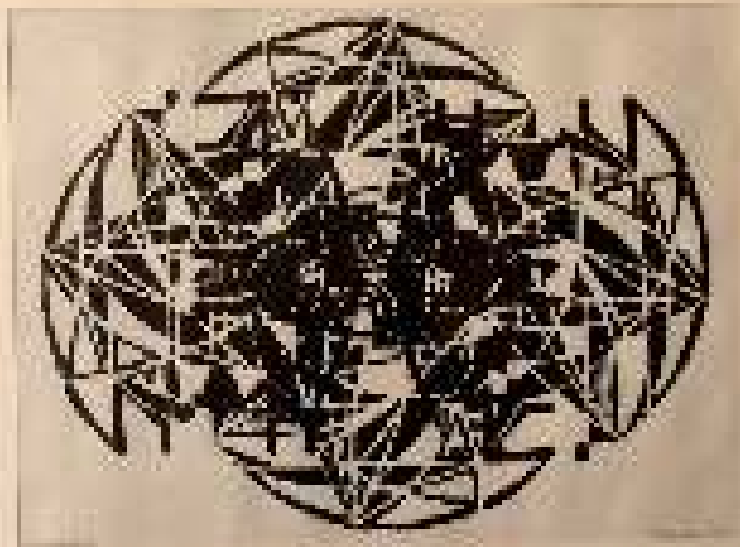


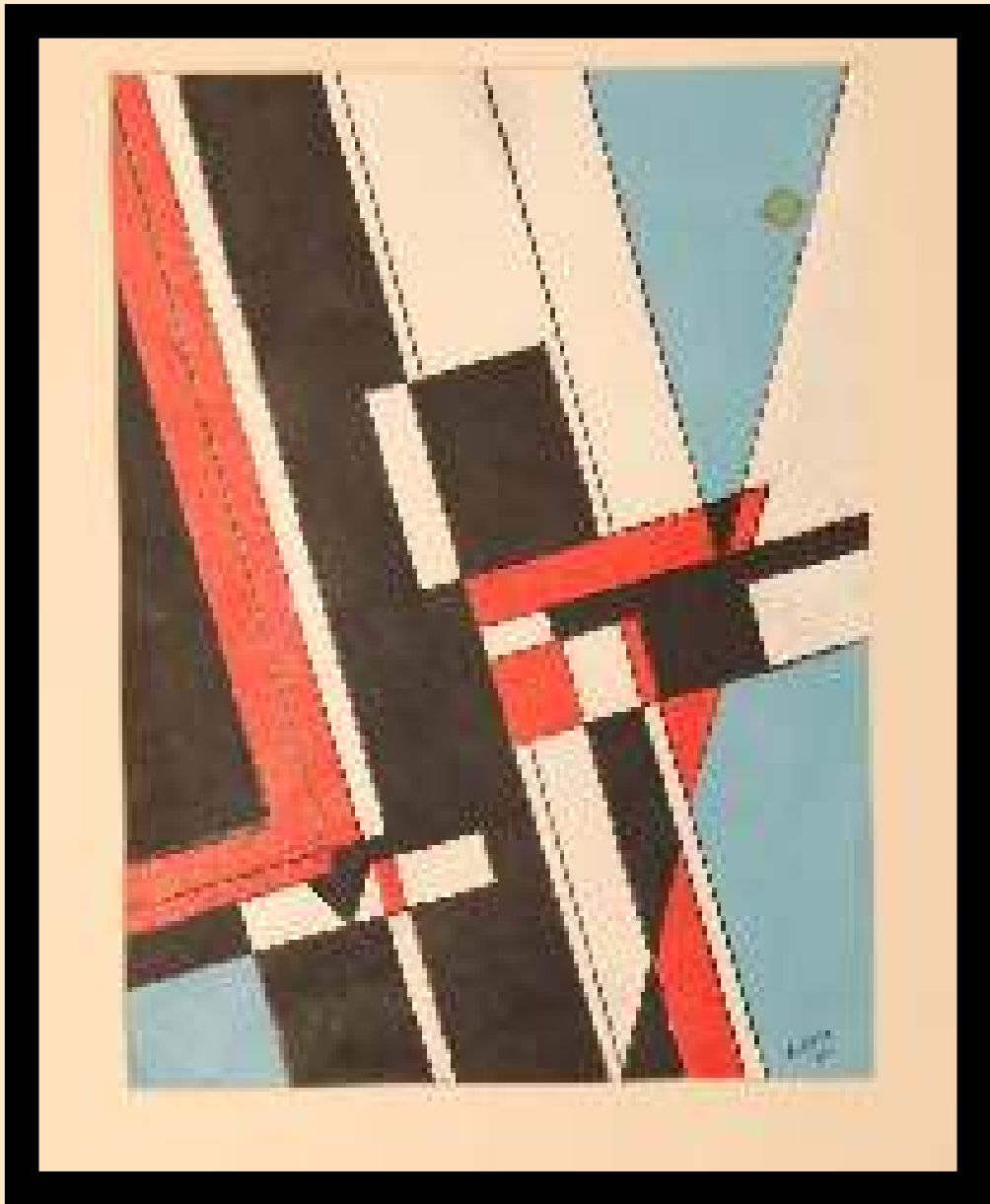


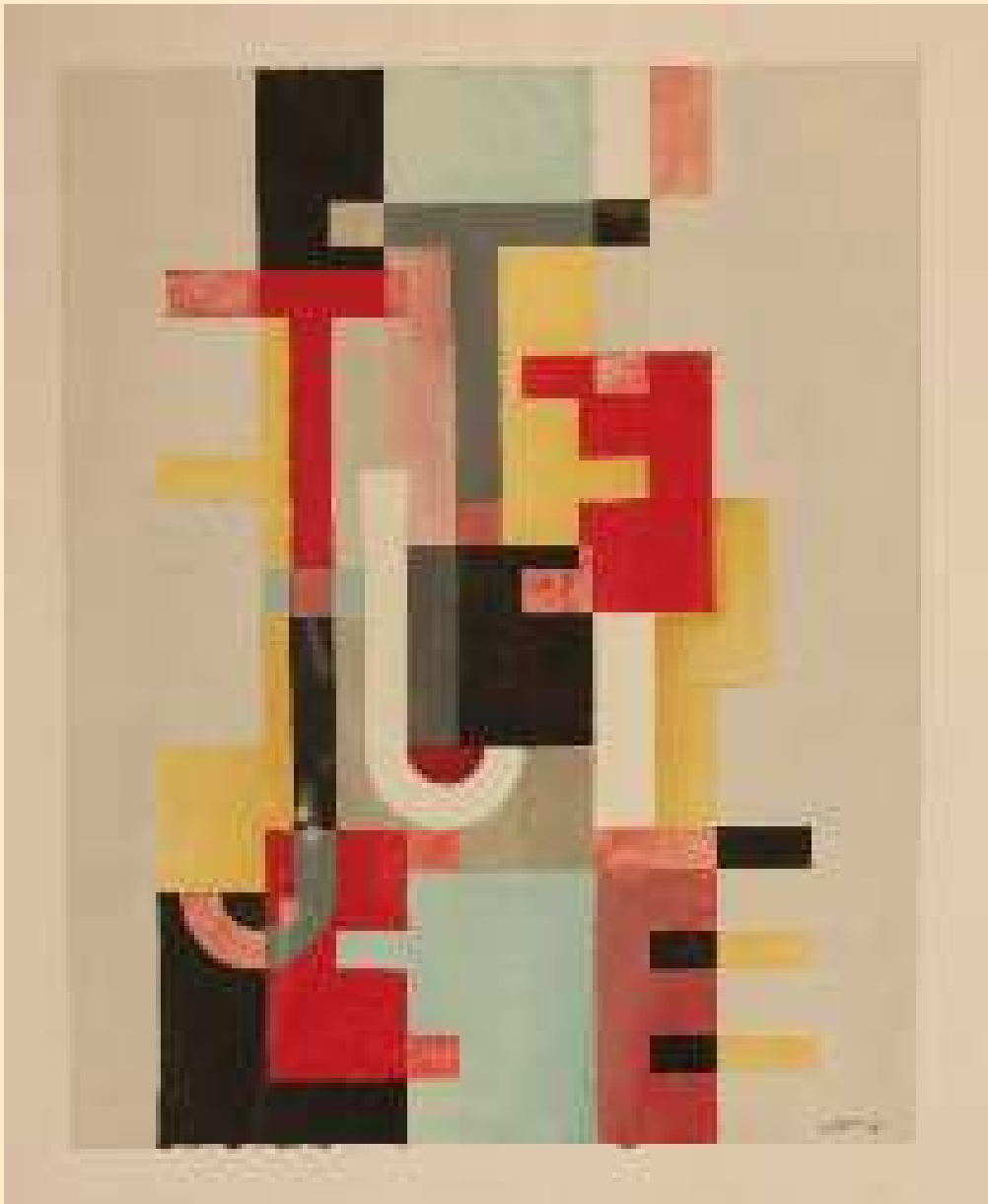




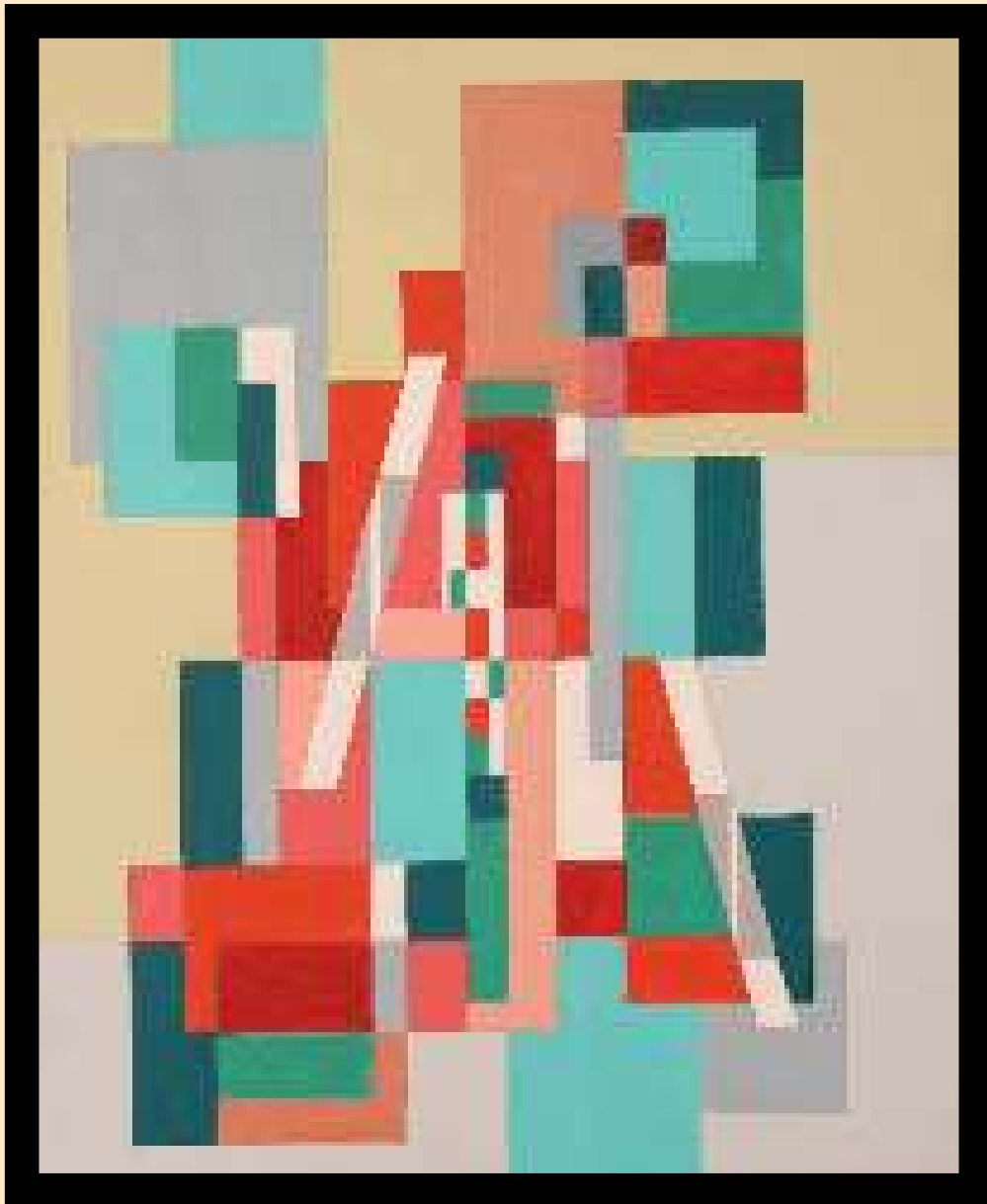
































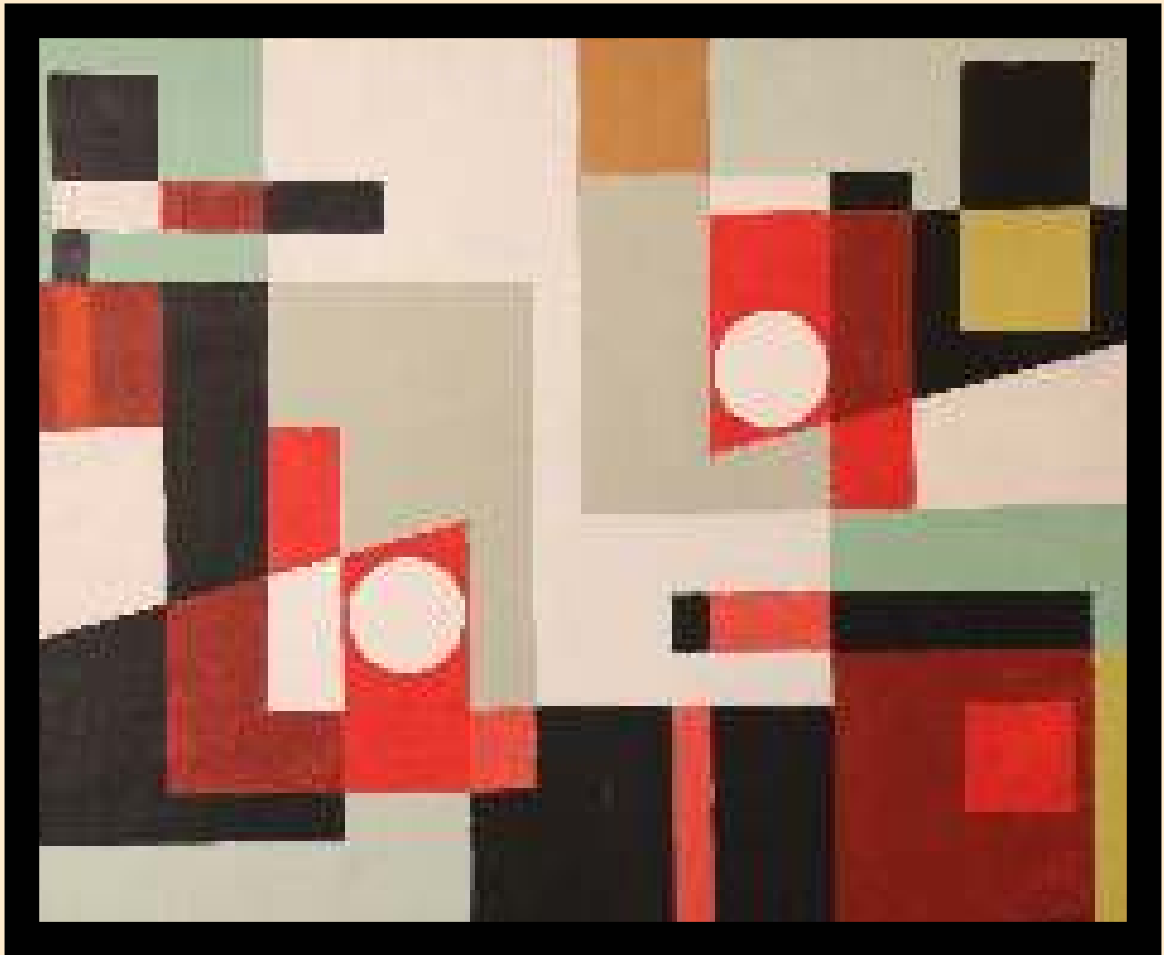


























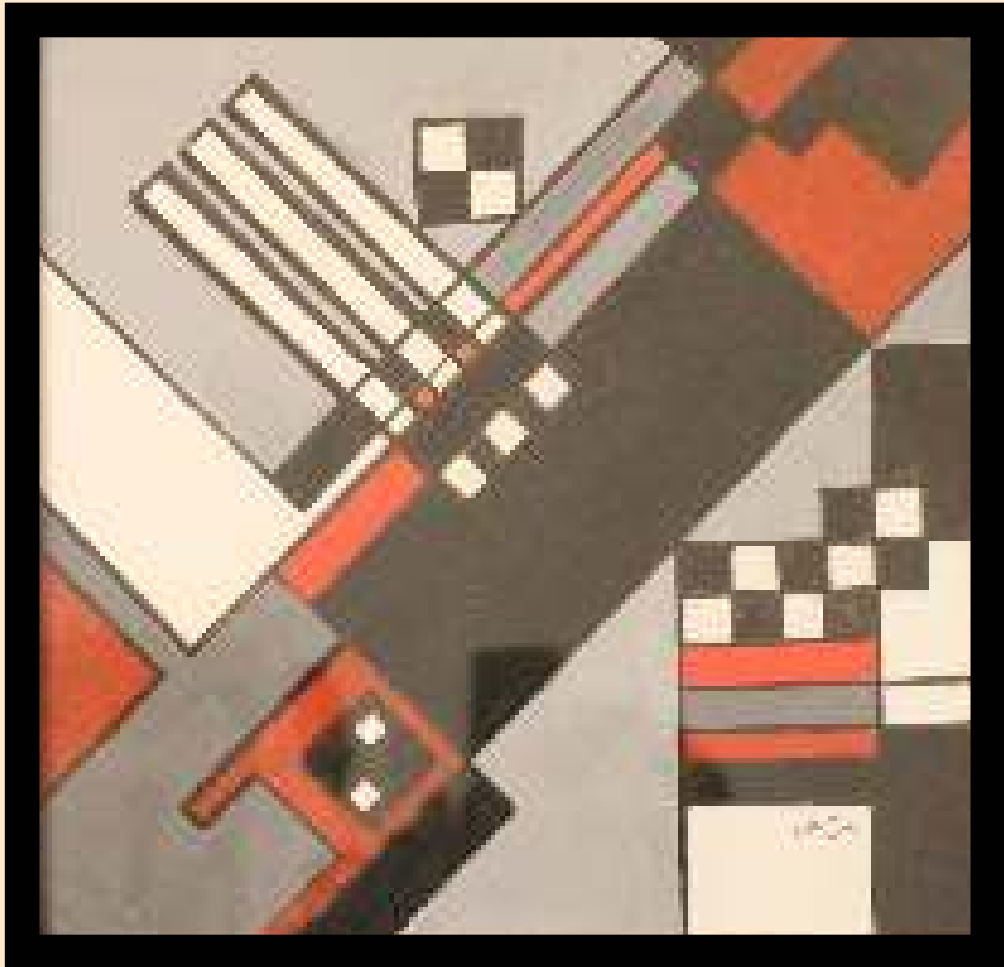


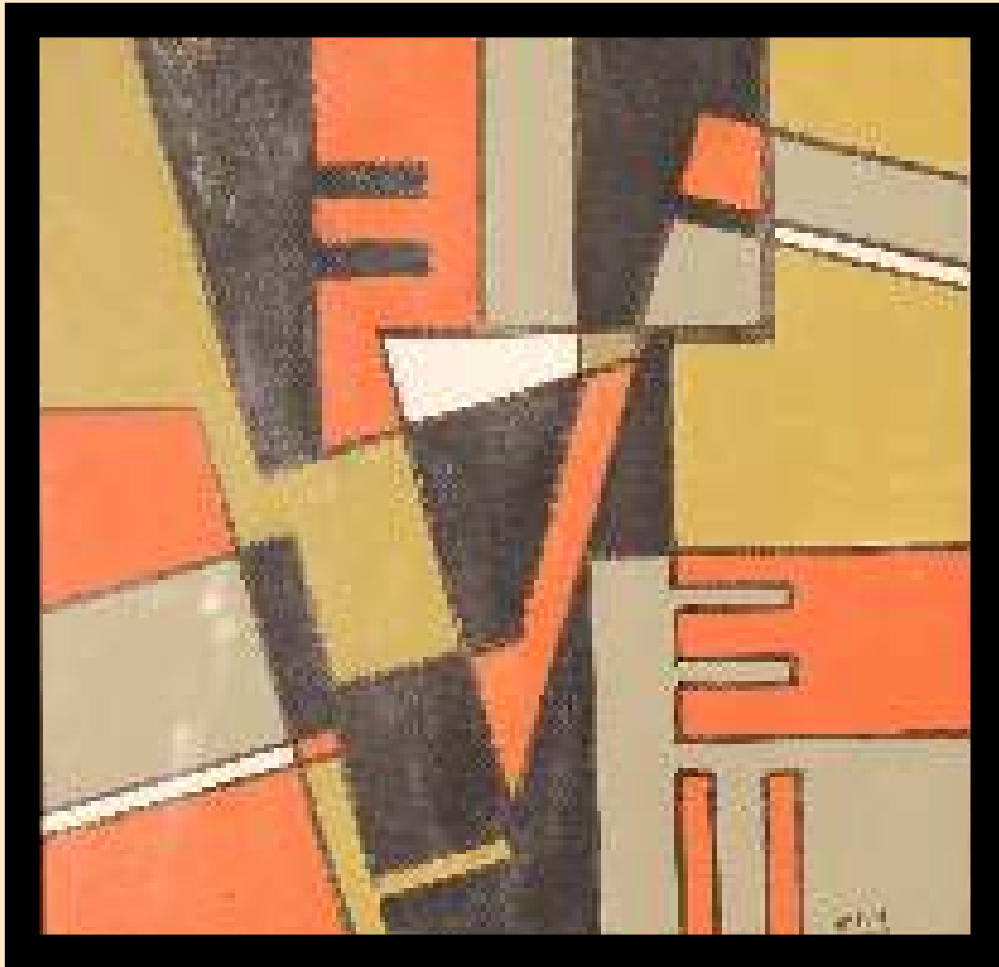








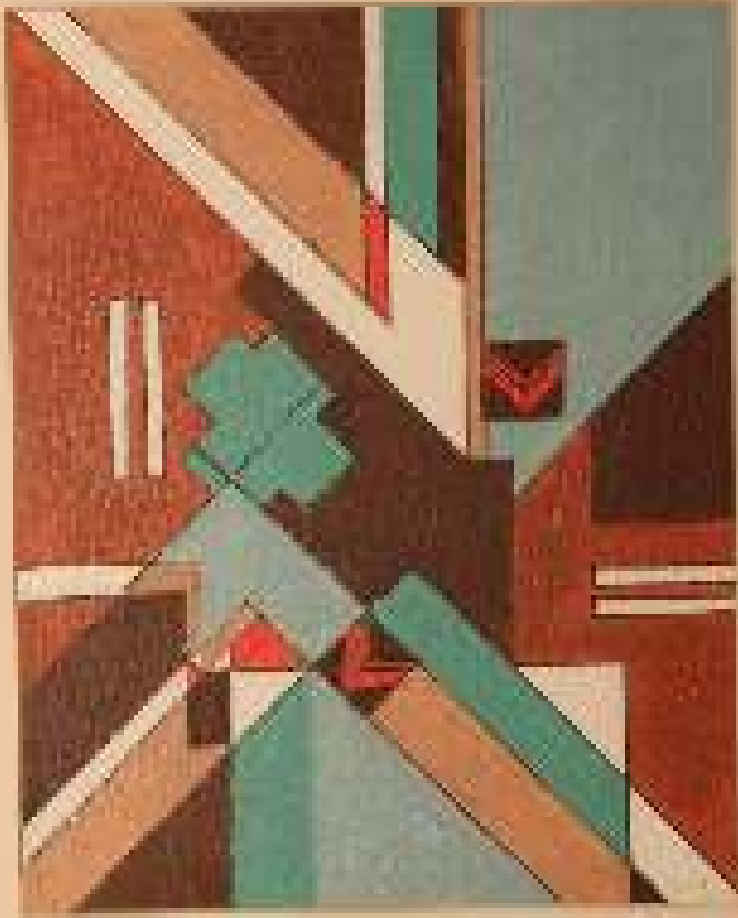












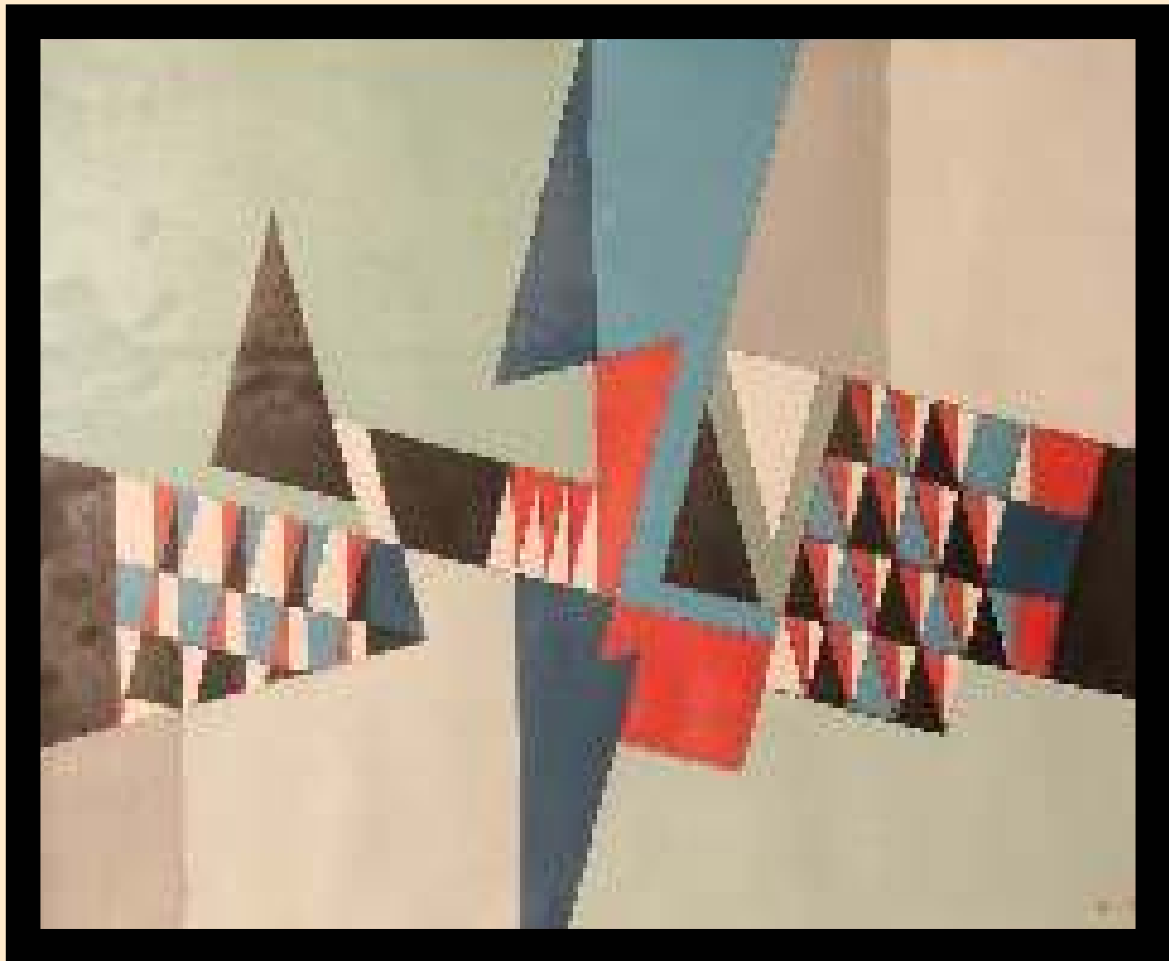




















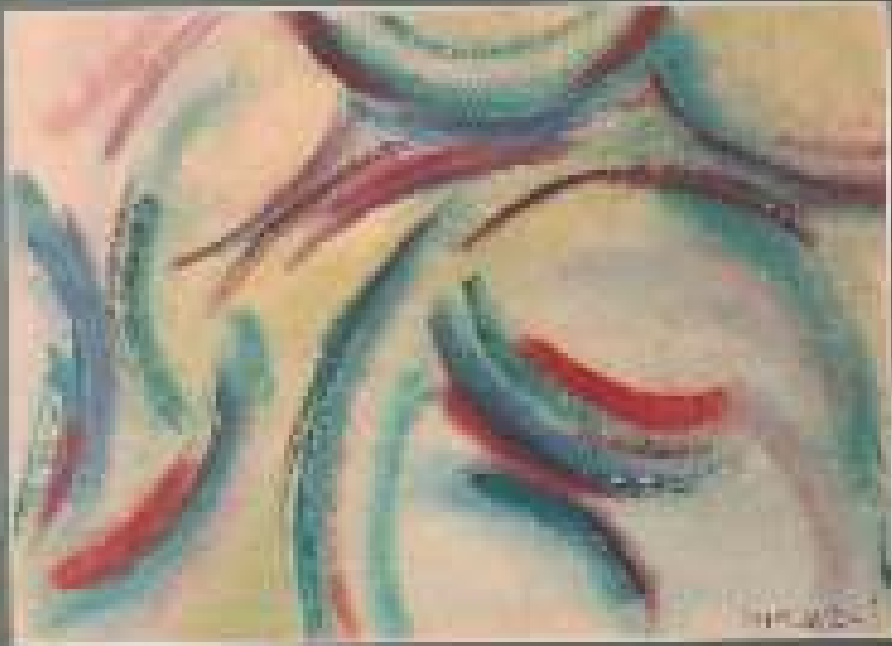






























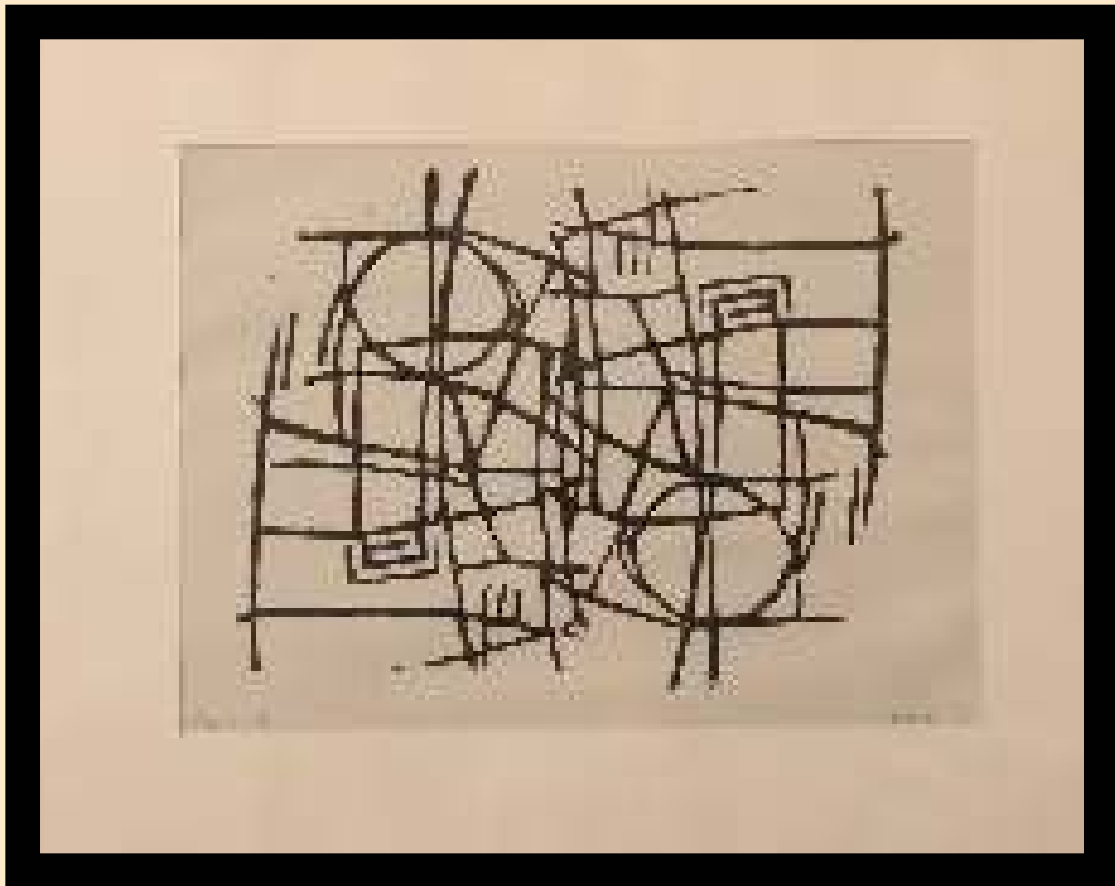














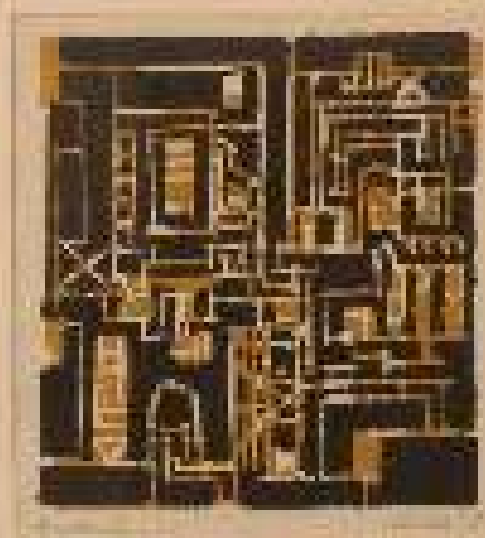


























105





107



















"IK SPEEL MET HET ZOEKEN EN
PLAATSEN VAN DE
VERHOUDINGEN EN PROBEER
DAN DOOR DE KLEUR TOT EEN
EMOTIONELE BELEVING TE
KOMEN."











453















127

















136



137

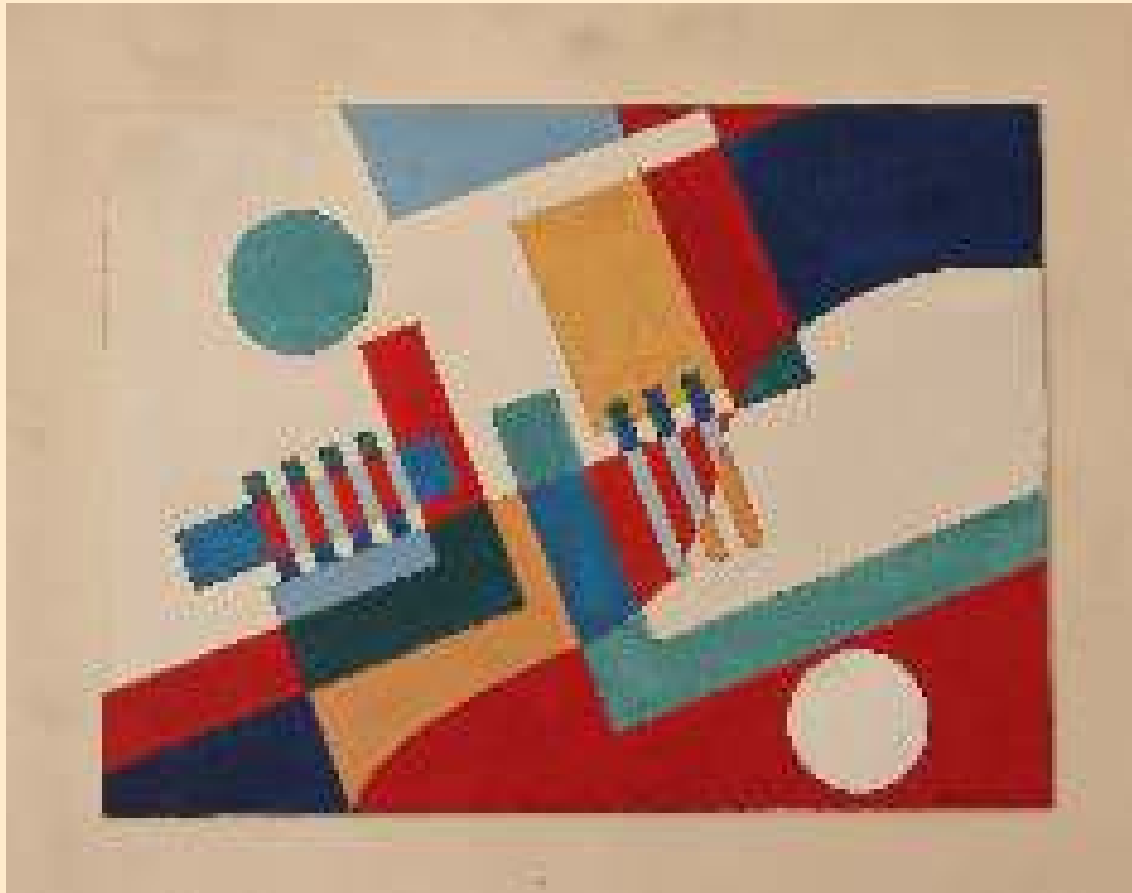








141







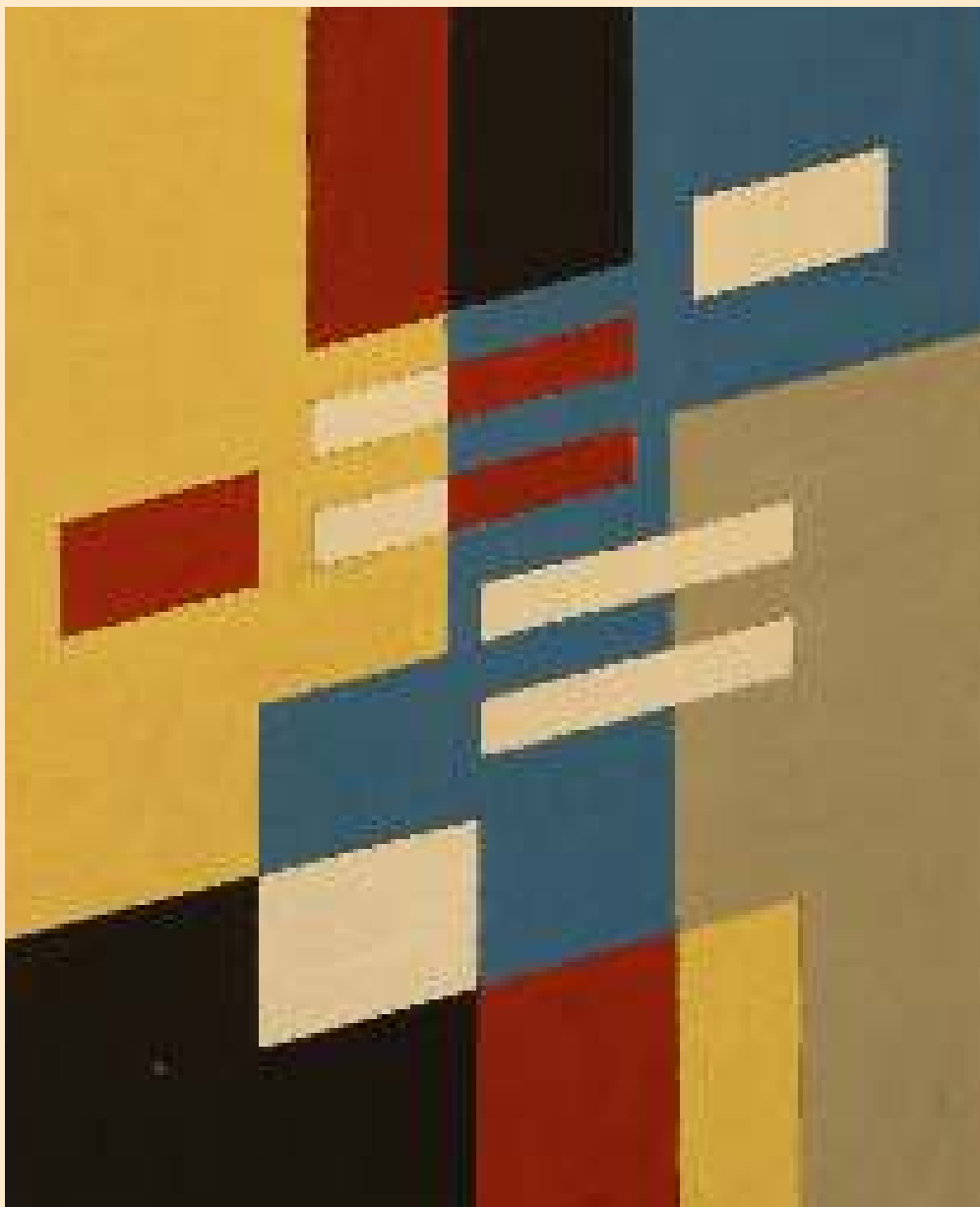


145

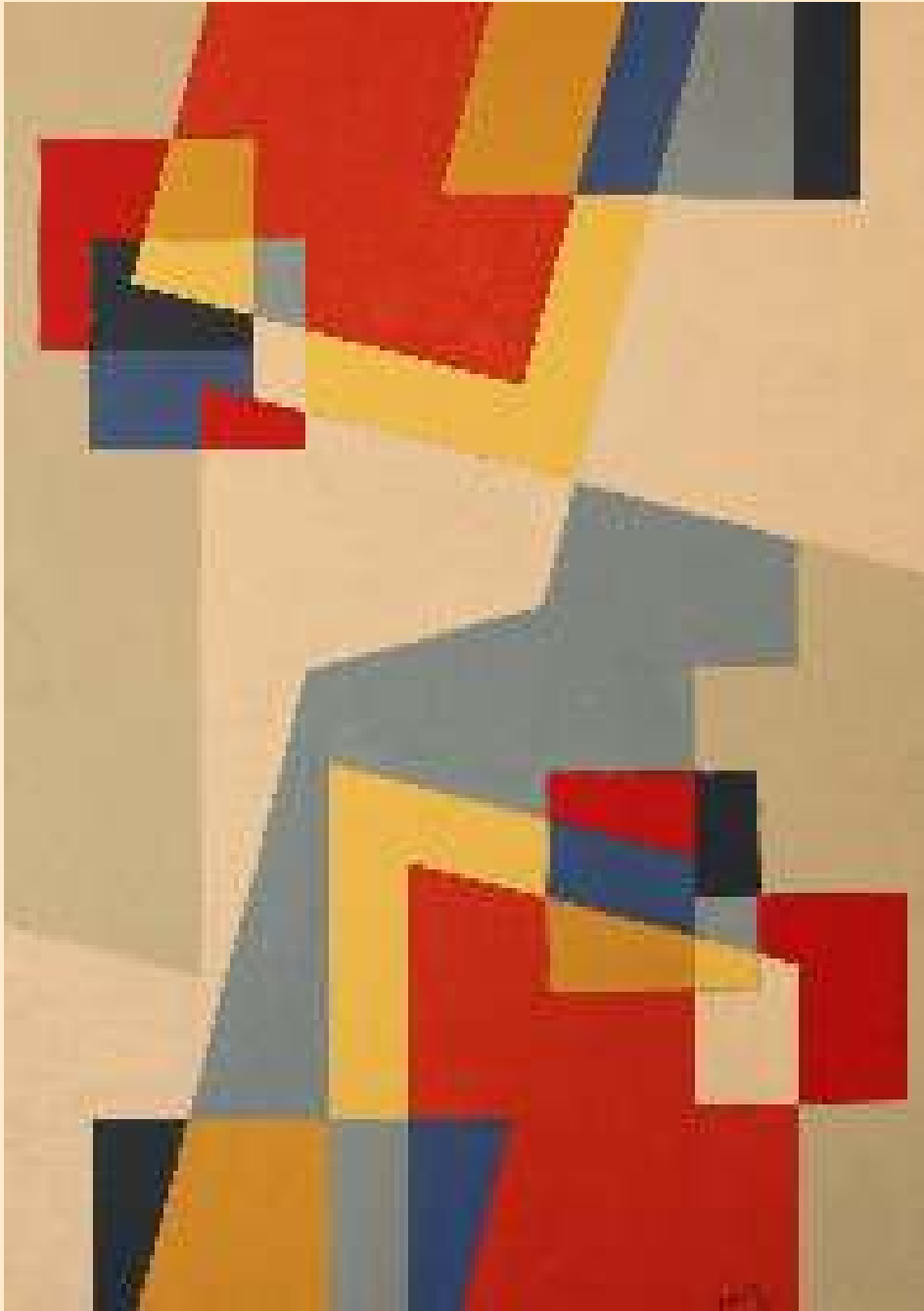




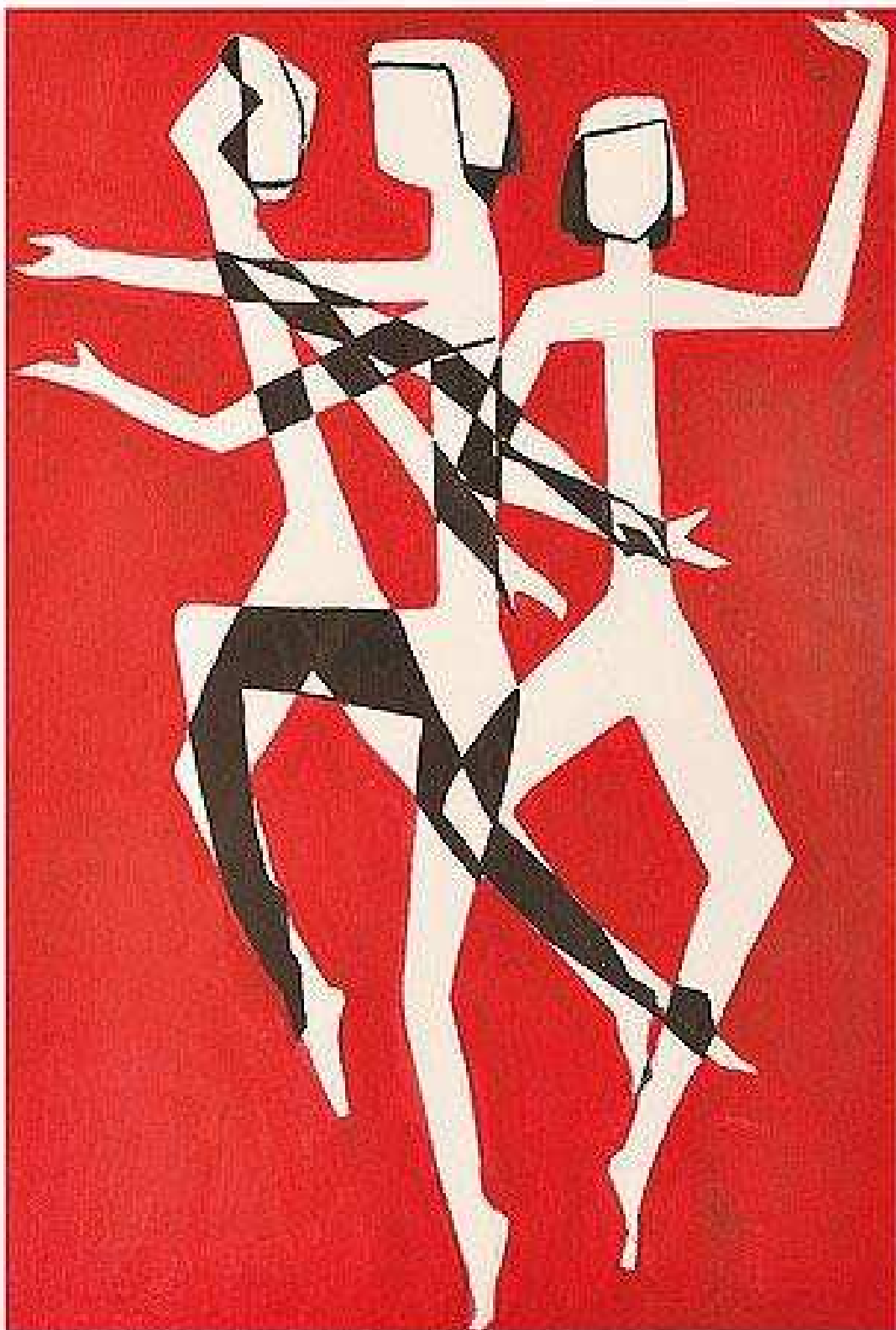








Tussen tijd en eeuwigheid



U I T N O D I G I N G

Estella den Boer

22.02.2014 - 04.05.2014

Mondriaanhuus.nl

Amersfoort

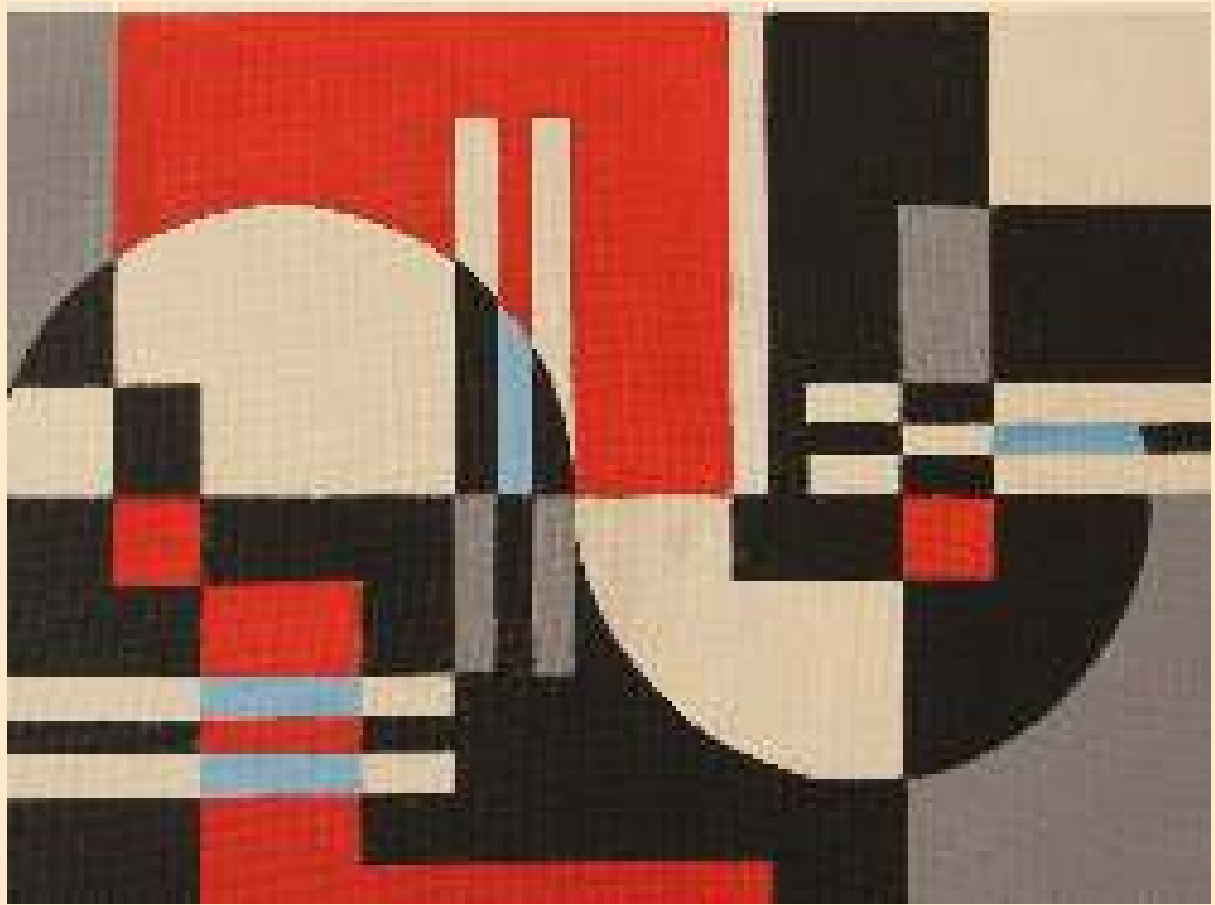
"ESTELLA DEN BOER VERLAAT NET ALS MONDRIAAN DE FIGURATIEVE SCHILDERKUNST OM ABSTRACT TE GAAN WERKEN. EVENALS BIJ MONDRIAAN ZIJN VOOR DEN BOER LEVENSOVERTUIGING EN MUZIEK EEN BELANGRIJKE BRON VAN INSPIRATIE. MAAR WAAR MONDRIAAN HET UNIVERSELE PROBEERT TE VERBEELDEN, WIL ESTELLA DEN BOER JUIST EEN DYNAMISCH WERELDBEELD VATTEN. DIT DOET ZIJ WEL MET DEZELFDE MIDDELEN ALS MONDRIAAN: LIJN, VLAKKEN, HELDERE KLEUREN EN RITME.



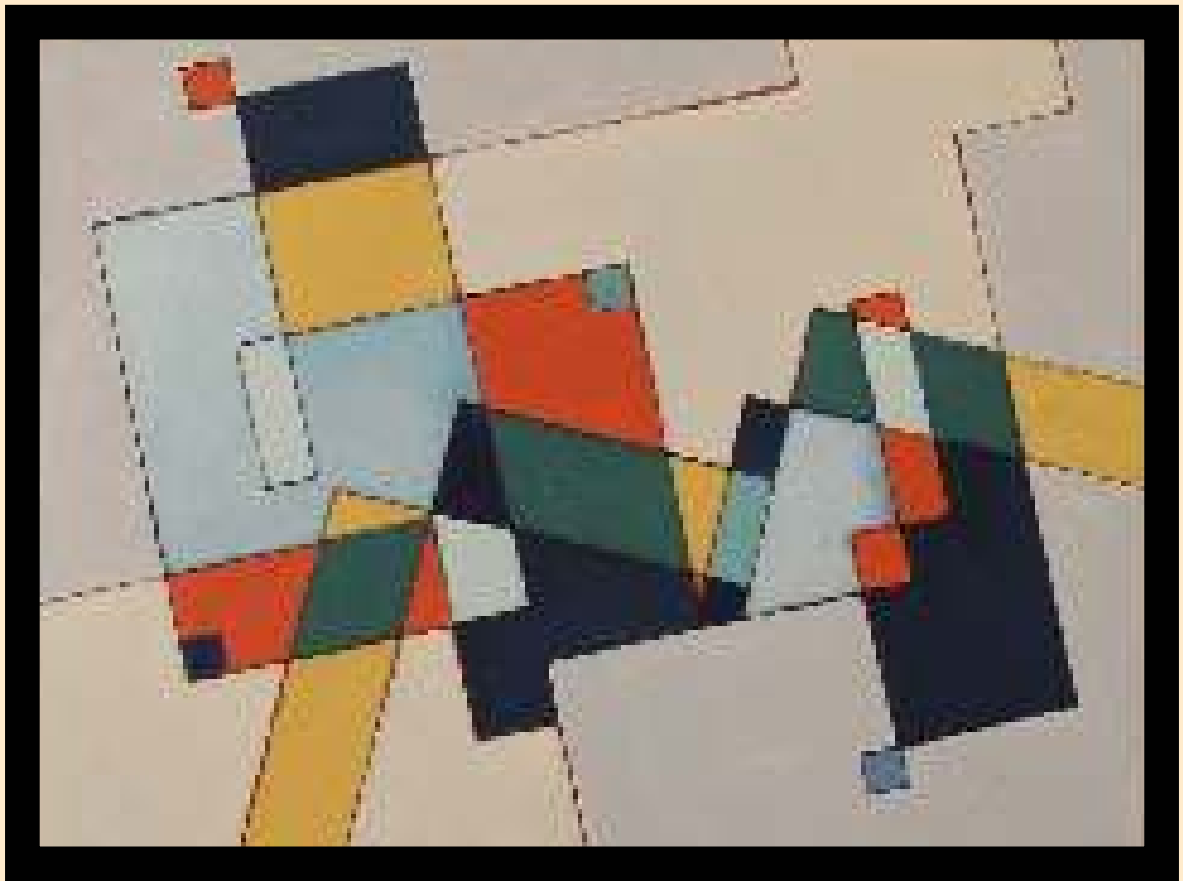


























165

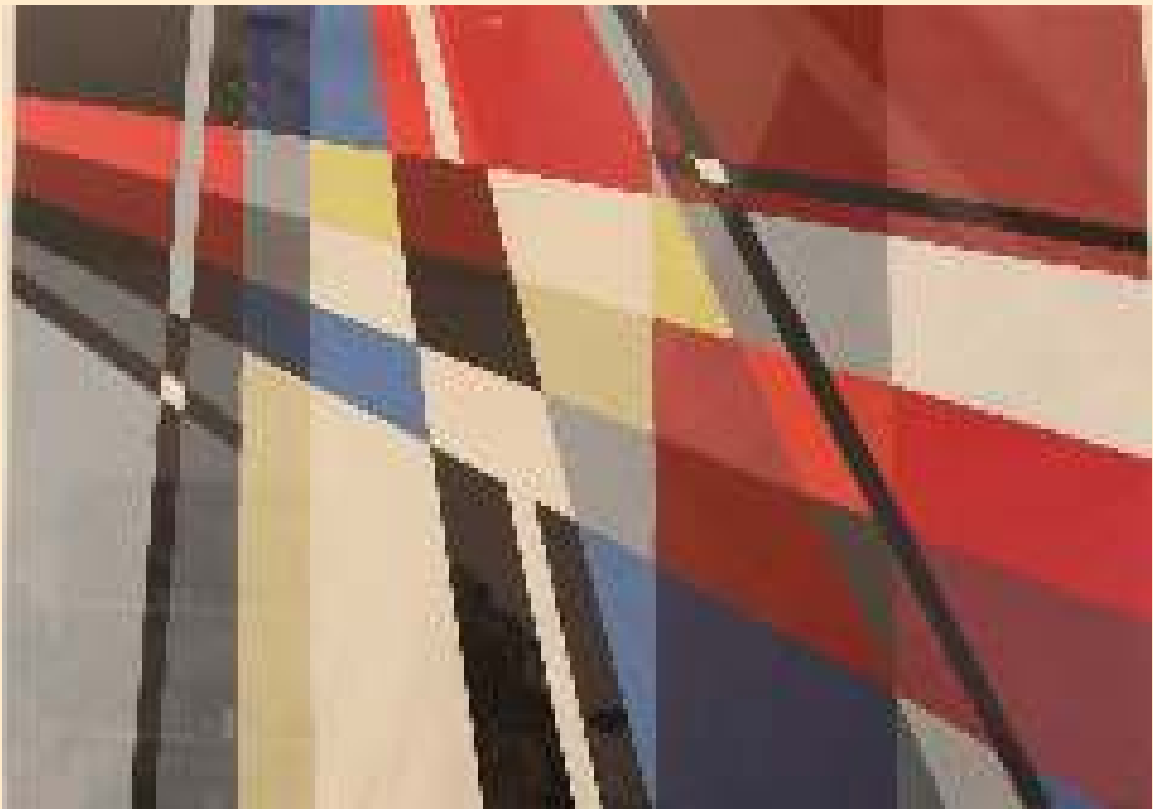




167







171





173











"HET WERK VAN ESTELLA DEN BOER IS VANAF 1995 TOT NA HAAR DOOD BIJ GALERIE STIJL TE ZIEN GEWEEST. NA DE NODIGE TWIJFEL KOOS ZE IN 1957 DEFINITIEF VOOR DE GEOMETRISCH-ABSTRACTE SCHILDERKUNST. TOEN ZE VER IN DE 90 EN BIJNA BLIND WAS, MAAKTE ZE NOG KLEINE WERKEN, DIE IN DE CHAUFFEURSWONING TE ZIEN WAREN."





199









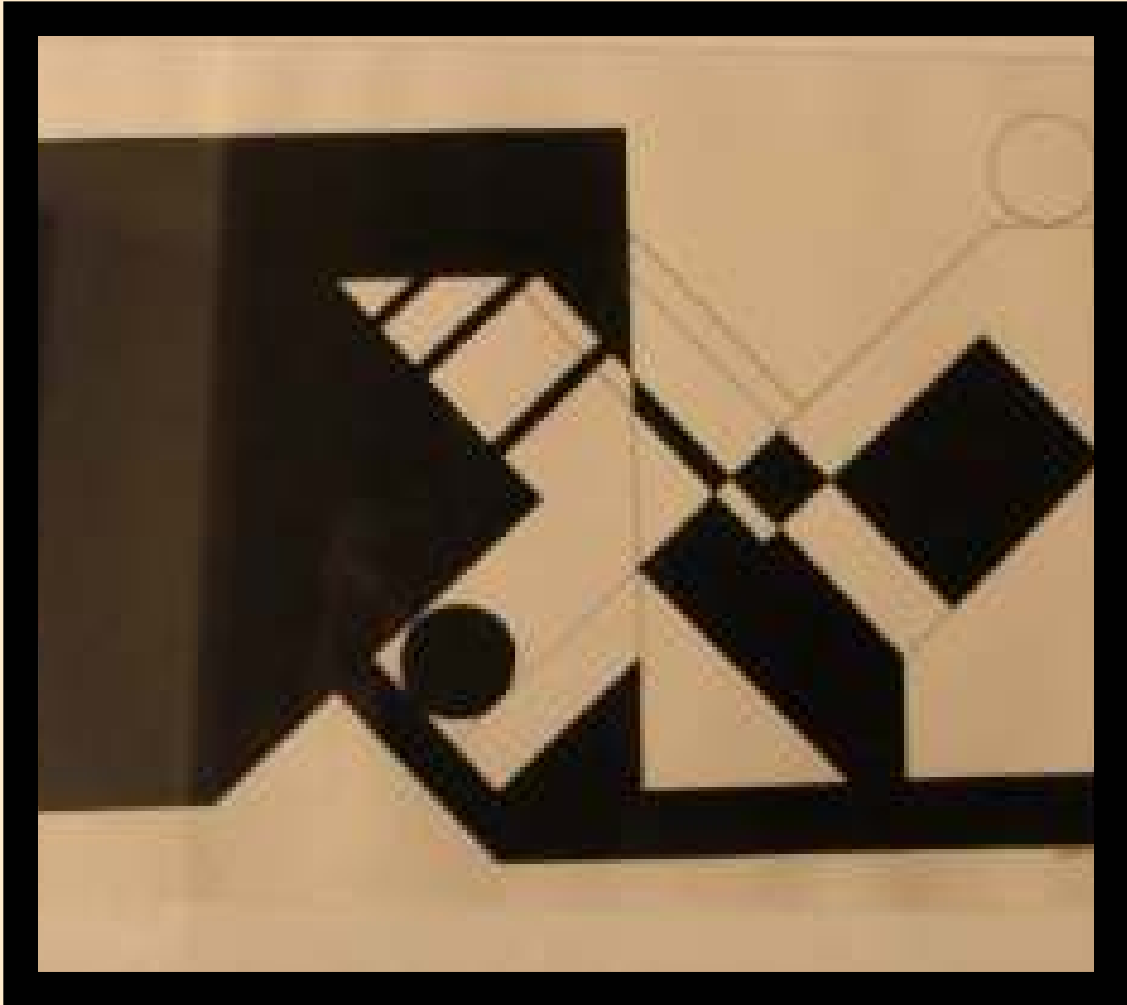




















213





214

215





217













223

























235





237

















245





247









250

